



INDOFINE Chemical Company, Inc.

121 Stryker Lane, Bldg. 30, Suite 1 • Hillsborough, NJ 08844 • U.S.A.

Phone: (908) 359-6778 • FAX: (908) 359-1179

website: www.indofinechemical.com

e-mail: chemical@indofinechemical.com

CERTIFICATE OF ANALYSIS

Catalog Number: 06-2170

Product Name: **LIGUSTROSIDIC ACID**

CAS Number: [96382-89-7]

Lot Number: 2105545

Chemical Formula: C₂₅H₃₀O₁₄

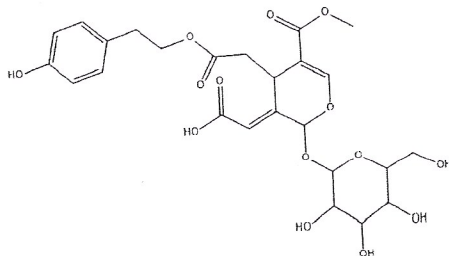
Molecular Weight: 554.50

Appearance: Off-white powder

Water Content: 3.04%

Storage: Store in cool, dry place. Protect from light.
Keep package airproofed when not in use.

Purity(HPLC): 93.41%



Prepared by:
Ramesh Mandadi
Ramesh Mandadi
Director of Operations

Reviewed and Approved by:
Sujata Moton
Sujata Moton
VP



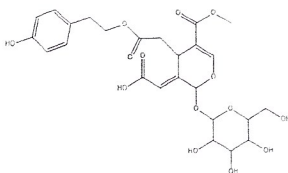
INDOFINE Chemical Company, Inc.

121 Stryker Lane, Bldg. 30, Suite 1 • Hillsborough, NJ 08844 • U.S.A.

Phone: (908) 359-6778 • FAX: (908) 359-1179

website: www.indofinechemical.com

e-mail: chemical@indofinechemical.com



HPLC ANALYSIS

Catalog No.: 06-2170

Product Name: Ligustrosidic acid

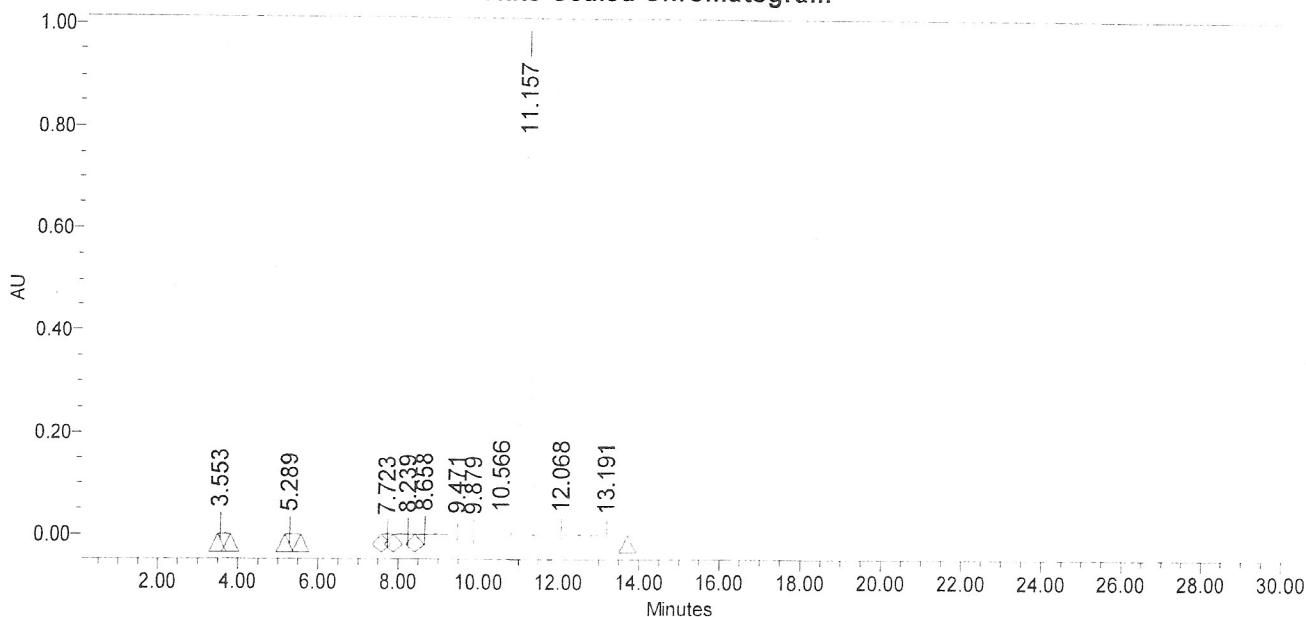
Lot No.: 2105545

SAMPLE INFORMATION

Sample Name: Ligustrosidic acid
Sample Type: Unknown
Vial: 54
Injection #: 1
Injection Volume: 10.00 ul
Run Time: 30.0 Minutes

Acquired By: cxy01
Sample Set Name:
Acq. Method Set: Ligustrosidic acid
Processing Method: sample
Channel Name: 221.0nm
Proc. Chnl. Descr.: PDA 221.0 nm

Auto-Scaled Chromatogram



Peak Results

| | Name | RT | Area | % Area | USP Plate Count | USP Resolution |
|----|------|--------|----------|--------|-----------------|----------------|
| 1 | | 3.553 | 75723 | 0.54 | 15537.03 | |
| 2 | | 5.289 | 46137 | 0.33 | 15017.12 | 11.94 |
| 3 | | 7.723 | 18217 | 0.13 | 13099.06 | 9.87 |
| 4 | | 8.239 | 82928 | 0.59 | | 1.61 |
| 5 | | 8.658 | 149762 | 1.07 | 6659.97 | 0.99 |
| 6 | | 9.471 | 54201 | 0.39 | 11438.33 | 1.81 |
| 7 | | 9.879 | 33996 | 0.24 | | 1.08 |
| 8 | | 10.566 | 227422 | 1.62 | 1438.27 | 0.99 |
| 9 | | 11.157 | 13114004 | 93.41 | 16402.76 | 0.86 |
| 10 | | 12.068 | 165011 | 1.18 | 6533.41 | 1.75 |
| 11 | | 13.191 | 71138 | 0.51 | 15201.89 | 2.01 |